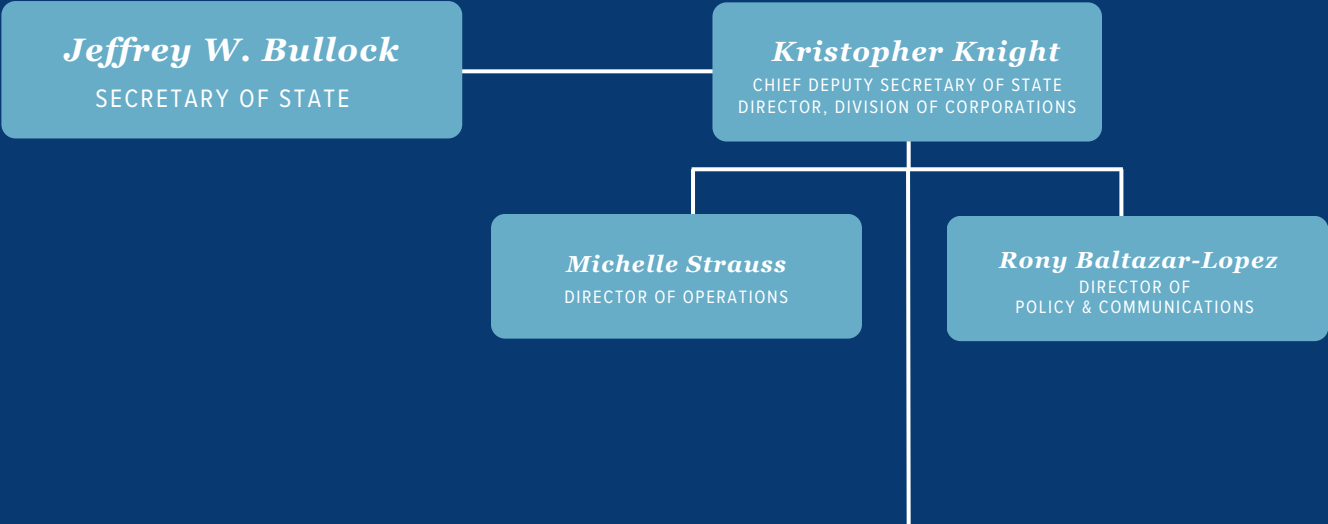




Delaware Department of State ORGANIZATIONAL CHART



DIVISION LEADERSHIP

DELAWARE PUBLIC ARCHIVES
Stephen Marz
Director

DELAWARE VETERANS HOME
Sandy Amaker
Nursing Home Administrator

DIVISION OF THE ARTS
Jessica Ball
Director

DIVISION OF CORPORATIONS
April Wright
Administrator

DIVISION OF HISTORICAL & CULTURAL AFFAIRS
Suzanne Savery
Director

DIVISION OF HUMAN & CIVIL RIGHTS
Romona Fullman
Director

DIVISION OF LIBRARIES
Dr. Annie Norman
State Librarian

DIVISION OF PROFESSIONAL REGULATION
Shauna Slaughter
Director

DIVISION OF THE PUBLIC ADVOCATE
Ruth Ann Price
Acting Public Advocate

DIVISION OF SMALL BUSINESS
Regina Mitchell
Director

GOVERNMENT INFORMATION CENTER
Dana Rohrbough
Director

**MERIT EMPLOYEE RELATIONS BOARD AND
PUBLIC EMPLOYMENT RELATIONS BOARD**
Debbie Murray-Sheppard
Executive Director

OFFICE OF THE ALCOHOLIC BEVERAGE CONTROL COMMISSIONER
Jacqueline Mette
Commissioner

OFFICE OF THE STATE BANK COMMISSIONER
Robert Glen
Commissioner

OFFICE OF VETERANS SERVICES
Miranda Mal
Acting Director

PUBLIC INTEGRITY COMMISSION
Benjamin Warshaw
Legal Counsel

PUBLIC SERVICE COMMISSION
Matt Hartigan
Executive Director